



**10/72-74 Talara Road Gymea NSW**

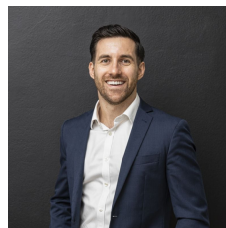
2 1 2

Immaculately presented and perfectly positioned, this spacious apartment offers an ideal flowing floor plan, luxurious inclusions, and a peaceful outlook. Boasting the lifestyle of complete convenience, and the perfect opportunity for those seeking low-maintenance living within a short distance from everything Gymea Village has to offer.

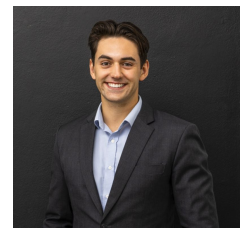
- Open plan living/dining area which flows to the covered balcony with an amazing outlook
- Modern kitchen with stone bench tops, quality appliances and an abundance of storage and bench space
- Two oversized bedrooms, both featuring built-in wardrobes and ceiling fans
- Bathroom includes a separate bath and shower, internal

[For full version visit the website](https://www.mattblakproperty.com.au/8697559)

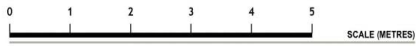
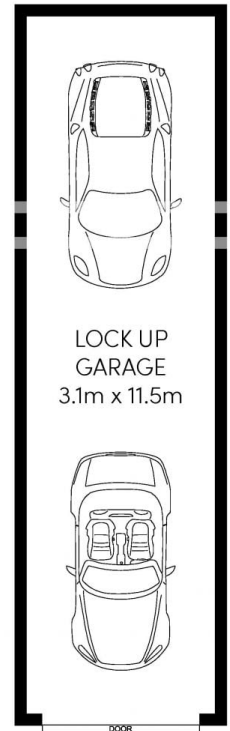
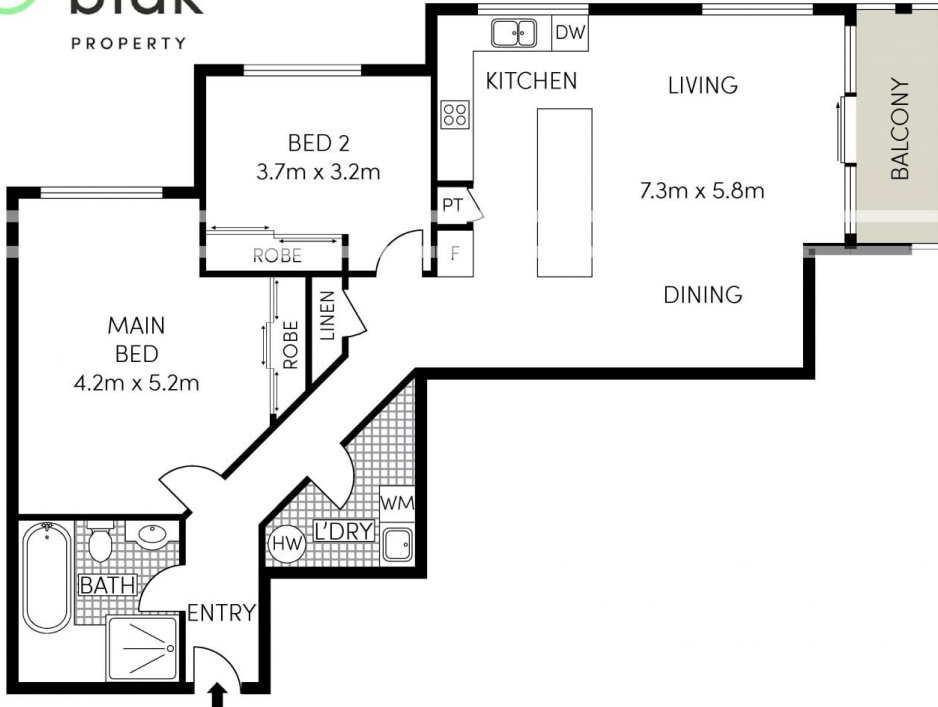
**Type** : Apartment  
**Price** : Private Negotiation  
**Building Size** : 130 sqm  
**View** : <https://www.mattblakproperty.com.au/8697559>



**Adam Sharp**  
9529 3433



**Declan Fallah**  
9529 3433



Whilst Habitat Creative Sydney has made every attempt to ensure the accuracy of the floor plan contained here, measurements are approximate and no responsibility is taken for any error, omission, or mis-statement. This plan is for illustrative purposes only.

🚗 2 🚻 1 🚗 2

10/72-74 Talara Road

GyMEA