

727/455C Captain Cook Drive Woollooware NSW

2 2 1

Commanding sweeping views across the Bay and City Skyline, this north-facing apartment combines premium finishes with everyday convenience.

It offers spacious open-plan living, a terrace balcony, and direct access to shops, gyms, dining, and resort-style amenities.

HIGHLIGHTS:

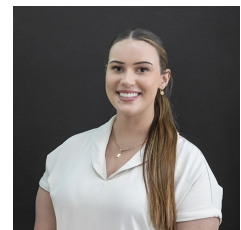
- Ideal North-facing position with City skyline and Bay views
- Generous open-plan living extending to a terrace balcony
- Stone kitchen equipped with Smeg appliances and gas cooktop
- Main bedroom with ensuite, built-in robes, and balcony
- Second bedroom with built in PLUS a full-sized study room

Type : Apartment

View : <https://www.mattblakproperty.com.au/8655460>



Jasmine Quirk
9529 3433



Ariana Anisimova
9529 3433

[For full version visit the website](https://www.mattblakproperty.com.au)

