



**15/110-112 Kingsway Woollooware NSW**

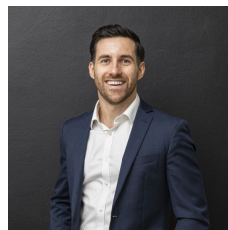
2 1 1

This beautiful apartment offers a lifestyle of comfort and convenience, featuring a north-facing aspect which fills the property with natural light. Ideally located just 160m from Woollooware Train Station and within walking distance of Cronulla's shops, beaches, and amenities, this stylish apartment is an excellent choice for first home buyers or savvy investors.

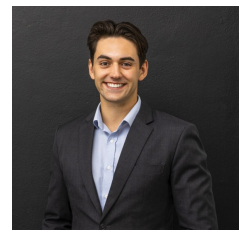
- Spacious living and dining areas bathed in natural light
- North-facing covered balcony excellent for entertaining
- Kitchen equipped with quality appliances, ample bench and cupboard space
- Stylish good sized bathroom includes a bathtub
- Large secure lock-up garage
- Ideal for first-home buyers and investors

[For full version visit the website](https://www.mattblakproperty.com.au/8288993)

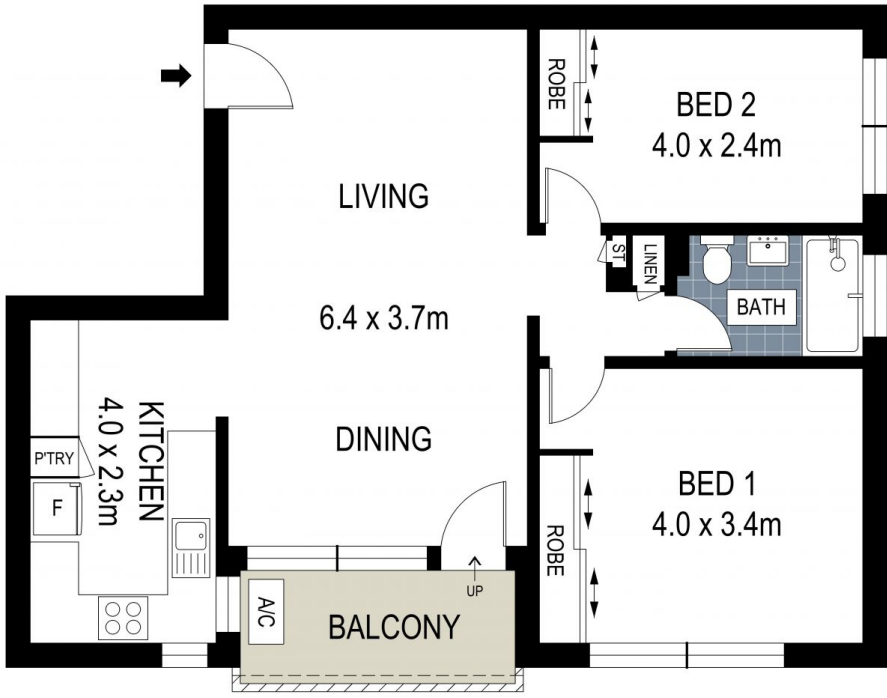
**Type** : Apartment  
**Price** : \$ 855,000  
**Land Size** : 93.9 sqm  
**View** : <https://www.mattblakproperty.com.au/8288993>



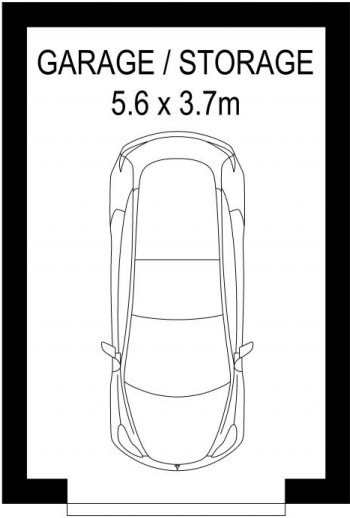
**Adam Sharp**  
9529 3433



**Declan Fallah**  
9529 3433

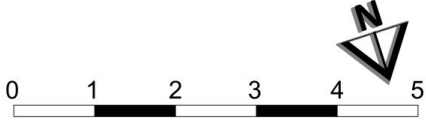


SECOND FLOOR



GROUND FLOOR

ADDRESS:  
15/110 Kingsway, Woollooware



DISCLAIMER: THIS IS FOR ILLUSTRATIVE PURPOSES ONLY, ALL DIMENSIONS ARE APPROXIMATE AND IT DOES NOT CONSTITUTE PART OF ANY LEGAL DOCUMENTS.