



**1/17 Harnleigh Avenue Woollooware NSW**

3 1 1

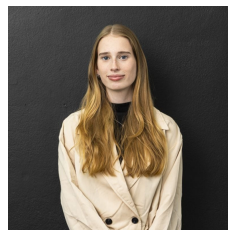
This inviting single-level villa features an open-plan layout that is designed for modern, convenient living. Nestled within a well-maintained complex of four, this home epitomizes easy living in a fantastic location that is perfect for young families, couples, and friends.

**Type** : Villa

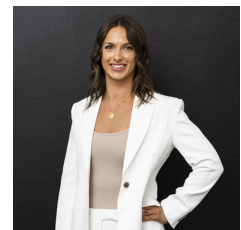
**View** : <https://www.mattblakproperty.com.au/8211240>

**HIGHLIGHTS:**

- Open living and dining area that effortlessly extend to outdoor entertaining
- Updated kitchen equipped with quality appliances and dishwasher
- Generous main bedroom plus two additional bedrooms, all with built ins
- Well-kept bathroom with separate bath and shower
- Single lock-up garage with convenient mezzanine storage

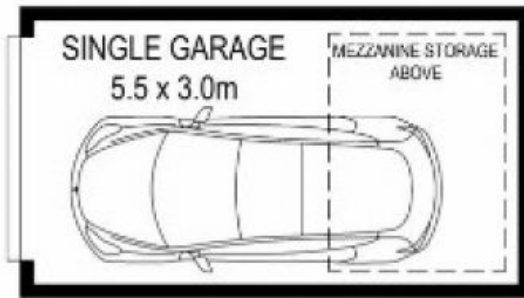


**Sophie Gardner**  
9529 3433



**Lara Masters**  
9529 3433

[For full version visit the website](https://www.mattblakproperty.com.au)



**GROUND FLOOR**



DISCLAIMER: THIS IS FOR ILLUSTRATIVE PURPOSES ONLY, ALL DIMENSIONS ARE APPROXIMATE AND IT DOES NOT CONSTITUTE PART C

1 / 17 Harnleigh Avenue, Woolooware