



11/1 Tathra Place Gymea NSW

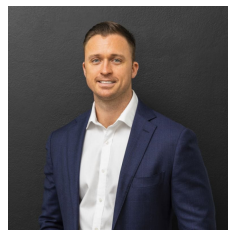
2 1 1

Nestled on the first floor of a boutique complex of 12, this contemporary light filled apartment offers spacious open plan living and dining areas that seamlessly extend to a large sun-drenched balcony perfect for year-round entertaining.

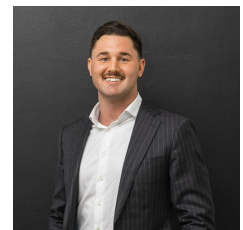
The apartment boasts modern interiors throughout, lift access from basement providing a convenient and low maintenance lifestyle. Positioned nearby to Gymea Village, transport, schools and amenities.

- Expansive open plan living spaces connect to a generous outdoor entertaining area
- Bright light filled interiors enhances space and comfort
- Stone kitchen with quality appliances, gas cooking and

Type : Apartment
View : <https://www.mattblakproperty.com.au/8099387>

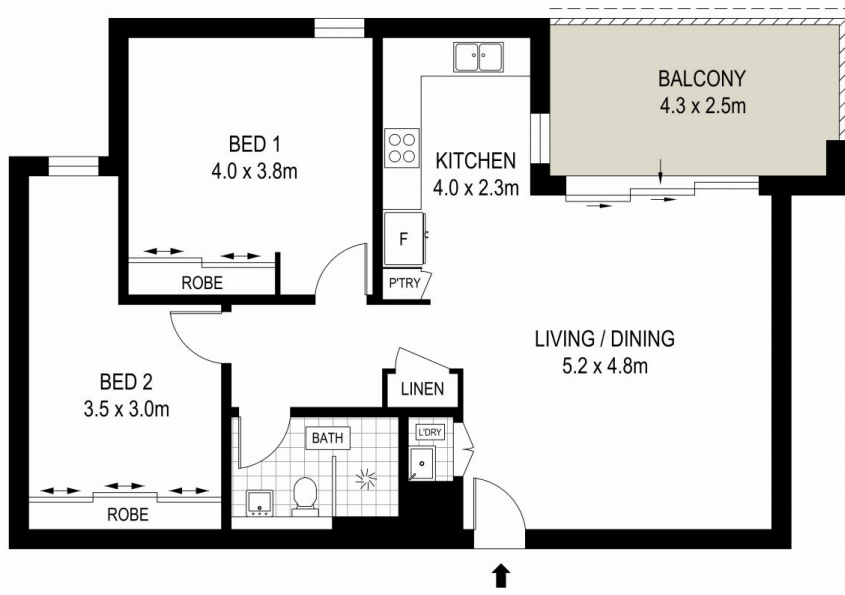


Matthew Johnston
9529 3433

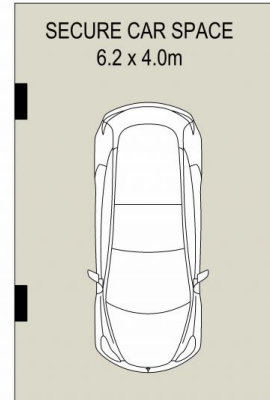


Billy Burke
9529 3433

[For full version visit the website](https://www.mattblakproperty.com.au)

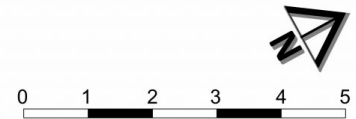


FIRST FLOOR



BASEMENT

ADDRESS:
11 / 1 Tathra Place, Gymea Bay



DISCLAIMER: THIS IS FOR ILLUSTRATIVE PURPOSES ONLY, ALL DIMENSIONS ARE APPROXIMATE AND IT DOES NOT CONSTITUTE PART OF ANY LEGAL DOCUMENTS.