



118 Peninsular Road Grays Point NSW

4 2 3

Situated on the elevated side of the street, this residence offers a picturesque outlook with abundant natural light. Perfect for a growing family, it boasts spacious living areas, a modern kitchen, and generously sized bedrooms. The private outdoor area features a landscaped garden and an outdoor entertaining area. Conveniently located near local schools, Jack Gray Café, Swallow Rock Reserve, and the boat ramp, this home blends comfort and convenience in a serene setting.

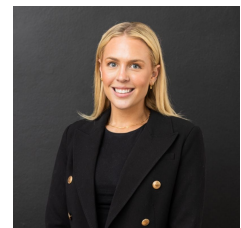
Type : House
Price : \$ 1,500,000
Land Size : 696 sqm
View : <https://www.mattblakproperty.com.au/80716>
 38

- Spread over two levels, this home offers ample space for the whole family.
- Two open-plan living areas feature large windows that flood the space with natural sunlight. One of the living spaces includes a cozy inbuilt fireplace.

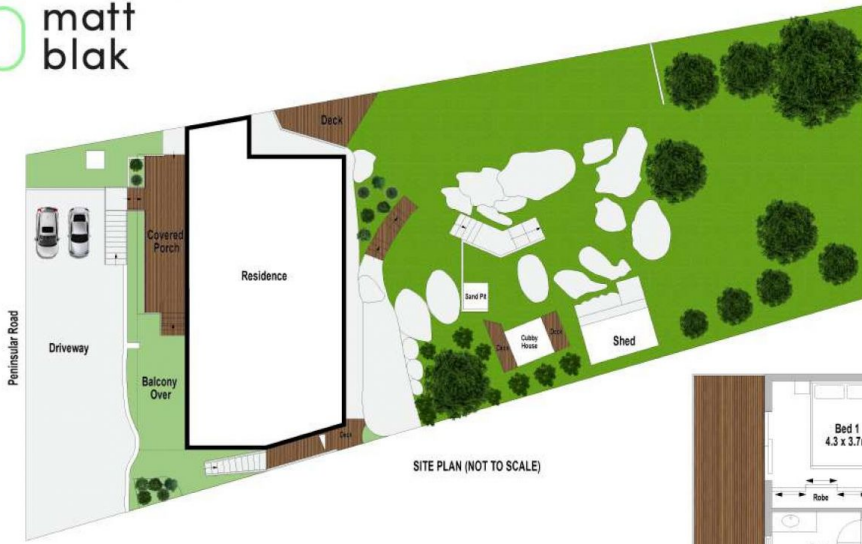
[For full version visit the website](https://www.mattblakproperty.com.au)



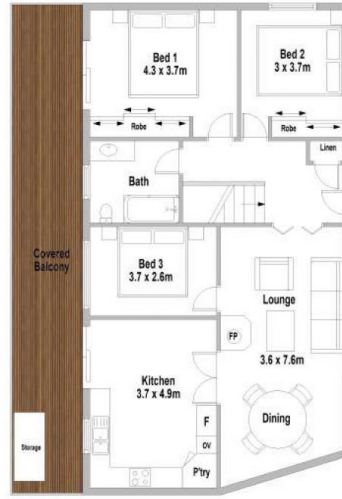
Patrick Swanson
9529 3433



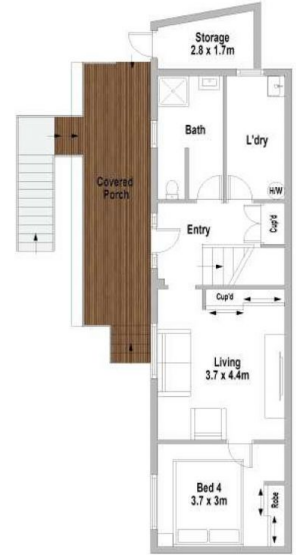
Madison Long
9529 3433



SITE PLAN (NOT TO SCALE)



FIRST FLOOR



GROUND FLOOR



118 Peninsular Road, Grays Point

Scale in metres. Indicative only. Dimensions are approximate. All information contained herein is gathered from sources we believe to be reliable. However, we cannot guarantee its accuracy and interested persons should rely on their own enquiries.