



**11 Hill Street Woolooware NSW**

2 2 2

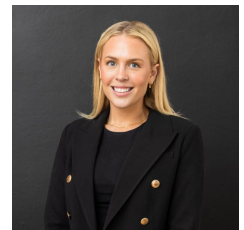
Welcome to your dream family home! Located on a prestigious north-to-rear 566sqm blue-chip parcel of land in a family-friendly street, this immaculate single-level brick home is being offered to the market for the first time in over 45 years. Located in one of the Sutherland Shires most tightly held enclaves only 600M to the heart of Cronulla and all the lifestyle opportunities it has to offer.

**Price** : Auction  
**Land Size** : 566 sqm  
**View** : <https://www.mattblakproperty.com.au/79826>  
 54

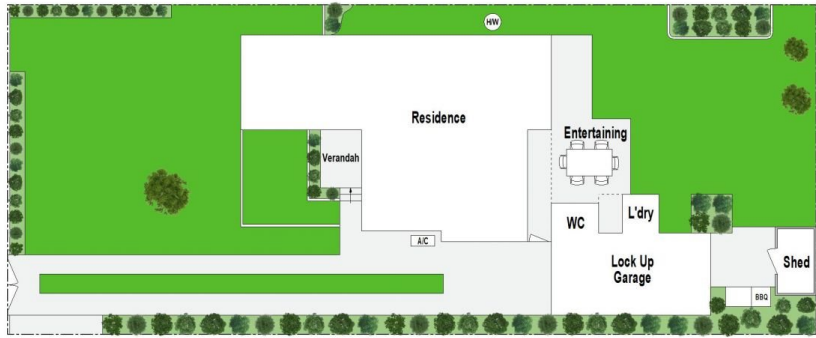
- ?Two spacious bedrooms, each with built-in wardrobes offering ample storage.
- ?Modern kitchen featuring quality appliances and abundant storage options.
- ?Separate living and dining areas seamlessly flow onto the north-facing, near-level grassed yard,
- ?Large external laundry with an additional toilet for added convenience.
- ?Two bathrooms, one with a combined shower and bath,



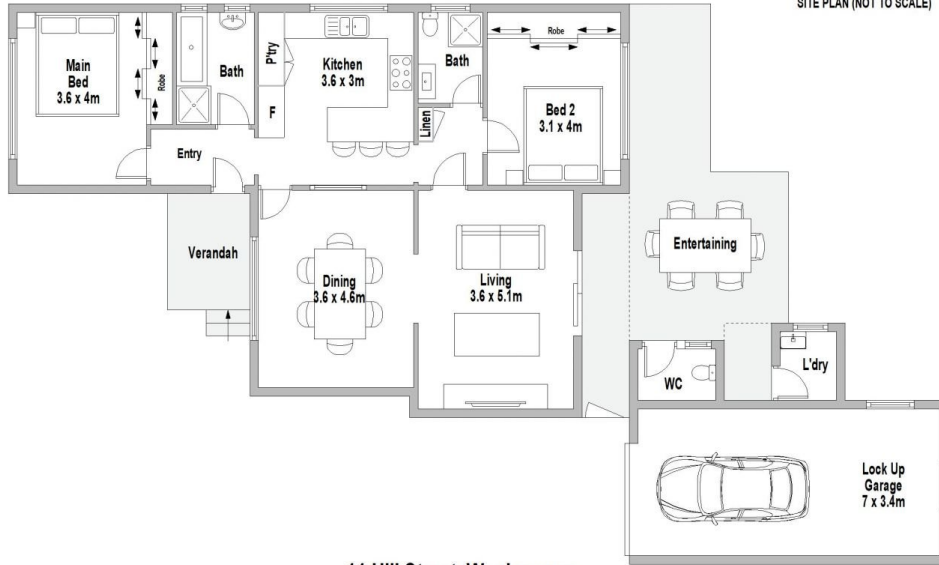
**Patrick Swanson**  
9529 3433



**Madison Long**  
9529 3433



SITE PLAN (NOT TO SCALE)



**11 Hill Street, Woolooware**



Scale in metres. Indicative only. Dimensions are approximate. All information contained herein is gathered from sources we believe to be reliable. However we cannot guarantee its accuracy and interested persons should rely on their own enquiries.