



449 Woollooware Road Burraneer NSW

5 3 2

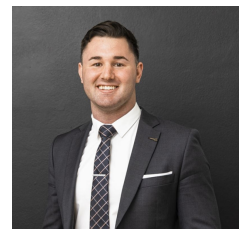
Peacefully positioned on the prestigious Burraneer peninsula, this much-loved family home offers an unrivalled lifestyle and a rare sense of seclusion. Designed to exceed all expectations of family living, this remarkable entertainer's home enjoys multiple living areas, across a spacious floorplan suited to the largest of families. This home features an enviable bayside position close to waterways, Cronulla's beaches, schools, transport and shops.

- Grand proportions and high ceilings paired with North aspect allows for great natural light
- Lounge and dining fitted with gas fireplace
- Bright open living areas flow seamlessly to outdoors
- Caesarstone kitchen equipped with quality appliances, 900mm gas cooktop, island bench & study nook
- Sparkling in ground pool enjoys sun all day with desirable

View : <https://www.mattblakproperty.com.au/7944052>



Matthew Johnston
9529 3433



Billy Burke
9529 3433

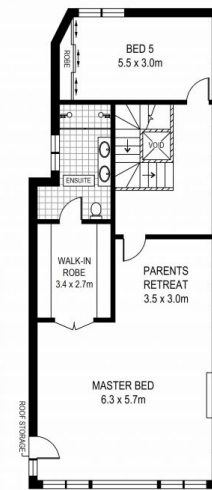


**SITE PLAN
(NOT TO SCALE)**

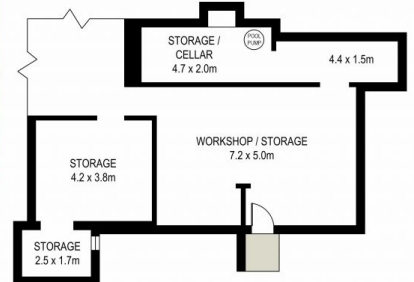
ADDRESS:
449 Woollooware Road, Burraneer



GROUND FLOOR



FIRST FLOOR



BASEMENT



0 1 2 3 4 5



DISCLAIMER: THIS IS FOR ILLUSTRATIVE PURPOSES ONLY, ALL DIMENSIONS ARE APPROXIMATE AND IT DOES NOT CONSTITUTE PART OF ANY LEGAL DOCUMENTS.