



## 23 Binaville Avenue Burraneer NSW

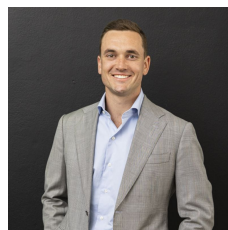
4 3 3

A prestige position and a turn-key home designed for functional living and high class entertaining. Set amongst the upper echelon of Sutherland Shire real estate a rare opportunity in a dress-circle address perfect for a down-sizer or family looking for modern living. Grand street appeal, manicured gardens and complimented by a unique architectural design.

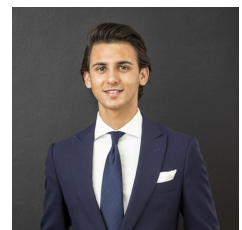
From the moment you step inside, you are greeted by elegant interiors and high-quality finishes. The grand entrance sets the tone with a floor to ceiling window, timber feature privacy screen and skylights throughout all add to the light, bright and airy feel. Meticulously designed this home has been built to the highest of standards and is ready to be moved into and enjoyed.

- Entertainer's kitchen with full view of the pool, super white

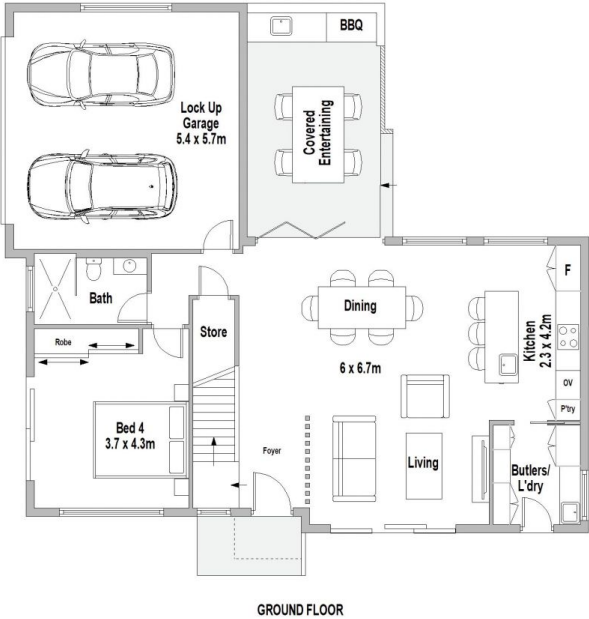
**Price** : Private Negotiation  
**Land Size** : 400 sqm  
**View** : <https://www.mattblakproperty.com.au/7941677>



**Blake Spooner**  
9529 3433



**Luke Ingram**  
9529 3433



23 Binaville Avenue, Burraneer

Scale in metres. Indicative only. Dimensions are approximate. All information contained herein is gathered from sources we believe to be reliable. However we cannot guarantee its accuracy and interested persons should rely on their own enquiries.