

48 Tara Street Sylvania NSW

5 🛏 4 🚗 2 🚗

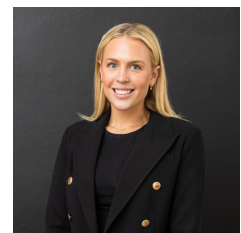
Located in one of Sylvania's most sought after pockets, this charming brick residence is bursting with promise and potential. It presents a unique opportunity to enhance the value of this superbly positioned property. Enjoying water views from every level & representing everything that is the quintessential family home, this property features a 15.2-meter frontage on a near level parcel of blue-chip land, gently sloping towards the street. This configuration offers unparalleled opportunities for development or the realisation of your dream family residence.

Land Size : 698 sqm
View : <https://www.mattblakproperty.com.au/7908457>

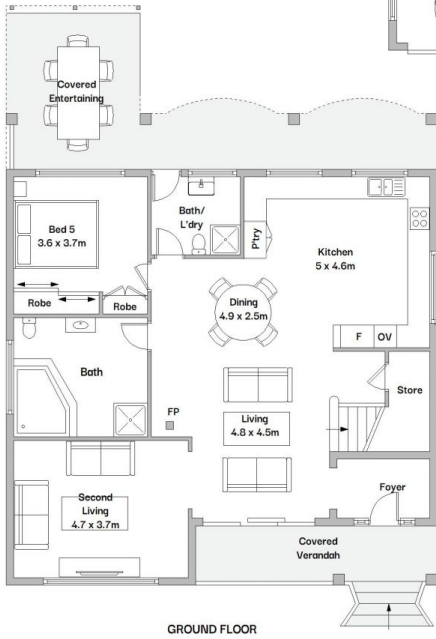
- Rare opportunity, offered to market for first time in over 30 years
- Spacious dedicated living room with a defined dining area looking over the Georges river
- Five generously sized bedrooms, four of which have their own private balconies



Patrick Swanson
9529 3433



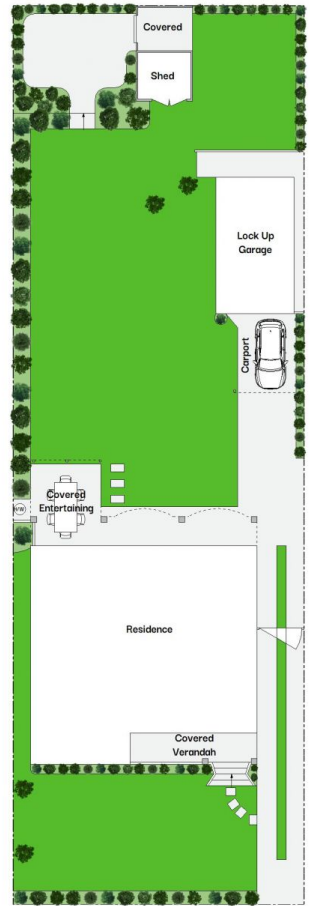
Madison Long
9529 3433



GROUND FLOOR



FIRST FLOOR



SITE PLAN (NOT TO SCALE)

48 Tara Street, Sylvania



Scale in metres. Indicative only. Dimensions are approximate. All information contained herein is gathered from sources we believe to be reliable. However we cannot guarantee its accuracy and interested persons should rely on their own enquiries.