






5/56 Hotham Road Gymea NSW

2  1  1 

Position in a boutique complex of 6, set in an iconic location, this home is positioned close to local schools, cafes and shops.

Type : Townhouse

View : <https://www.mattblakproperty.com.au/7380651>

HIGHLIGHTS:

- Two oversized bedrooms, both with ceiling fans
- Split system air conditioning in living and main bedroom
- Open plan kitchen with dishwasher
- Internal laundry w/extra toilet downstairs
- North facing frontage and generous sized courtyard
- * Pets upon application

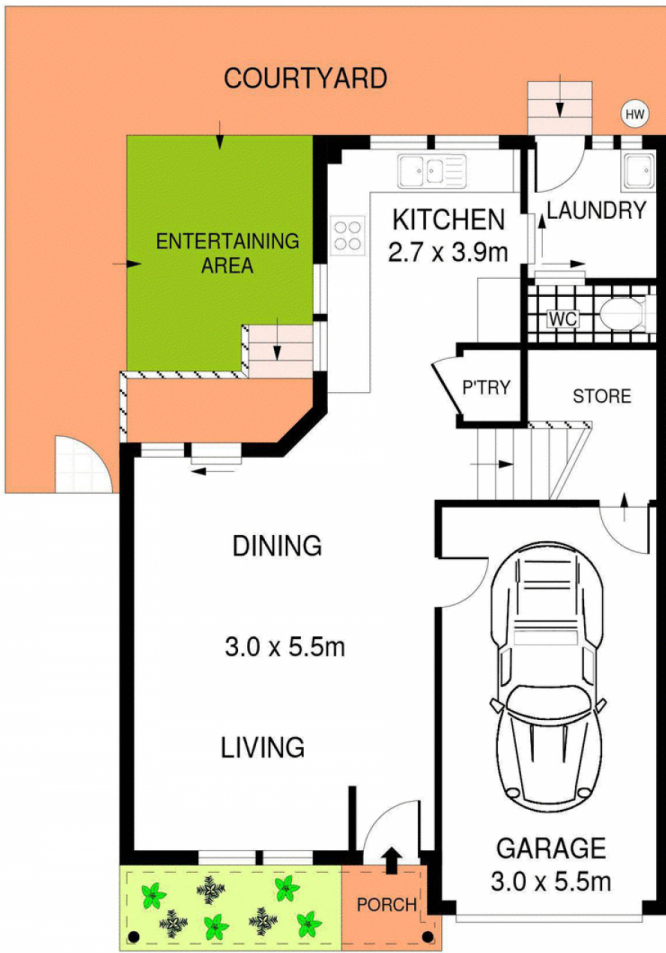
*Apply Via Tapp (Online Application) - <https://t-app.com.au/mattblak>

For all enquiries, please contact Jasmine on 0428 486 669.

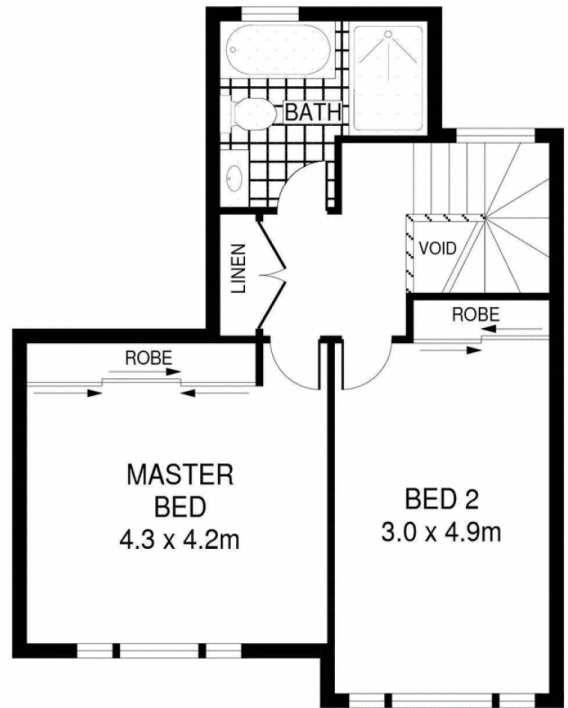
[For full version visit the website](https://www.mattblakproperty.com.au)



Jasmine Quirk
9529 3433



GROUND LEVEL



LEVEL ONE



PLANS SHOWN ONLY INDICATIVE OF LAYOUT. DIMENSIONS ARE APPROXIMATE.
Ref. No: 71754



5/56-58 HOTHAM ROAD

GYMEA