



153A Gymea Bay Road Gymea NSW

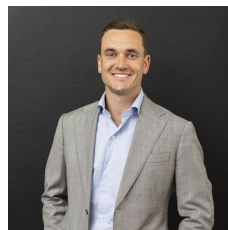
5 🛏 3 🚿 2 🚗

Presenting well thought out interiors and set in a sought after family & down-sizer friendly location only a short level walk to Gymea Village. Showcasing high-end fixtures and finishes this well designed modern five-bedroom home boasts an open plan layout with plenty of room for the growing family. Feature windows amplifying the northerly aspect and highlighting the pool from the kitchen and living areas. This home is the ultimate retreat for those looking for a comfortable yet spacious family home, or executive downsize.

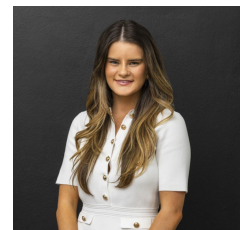
- High ceilings from the foyer to the kitchen and dining area with floor to ceiling windows reflecting the light throughout
- Stone bench tops, top of the range kitchen appliances, hidden walk in pantry and custom cabinetry

[For full version visit the website](https://www.mattblakproperty.com.au/71562)

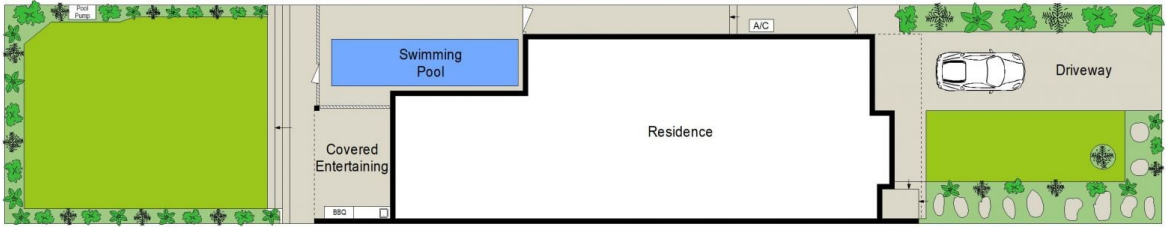
Type : Semi Detached
Price : \$ 2,025,000
Land Size : 410.2 sqm
View : <https://www.mattblakproperty.com.au/71562>
 41



Blake Spooner
9529 3433



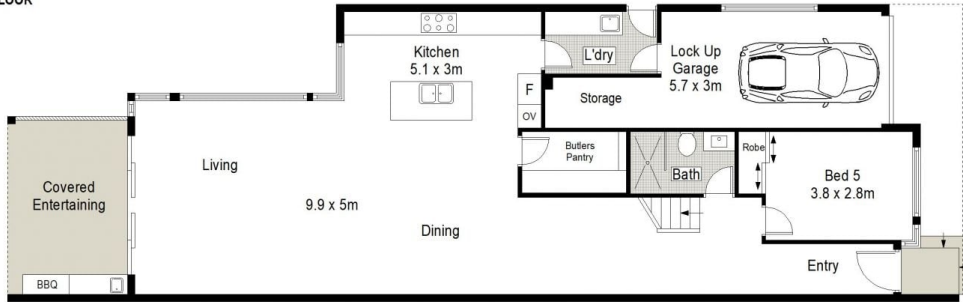
Ella Scott
9529 3433



SITE PLAN (NOT TO SCALE)



FIRST FLOOR



GROUND FLOOR



0 1 2 3 4 5 METRES

153a Gymea Bay Road, Gymea

5 3 1

Scale in metres. Indicative only. Dimensions are approximate. All information contained herein is gathered from sources we believe to be reliable. However we cannot guarantee its accuracy and interested persons should rely on their own enquiries.

